

TERRAZA

B A L E A R



Exclusive Interviews

SHOWCASE OF OUR TOP PROJECTS THE TEAM BEHIND THE SCENES

terrazabalealear.com

INTERIOR DESIGN & FURNITURE





Minotti
70 YEARS

CONTENTS

Essential Design

PROJECTS | Four of our latest design projects

CLOUD | 04

CAP ADRIANO | 20

CALIFORNIA | 30

GABELLÍ | 38

OUR SERVICES | The essence of our work

MAIN DESIGN | 54

INTERIOR DESIGN | 56

STYLISM | 58

KITCHEN | 60

SHOWROOM | 62

INTERVIEWS | Essential moments with...

DESIGNER RODOLFO DORDONI | 68

DESIGNER SEBASTIAN HERKNER | 76

THE TEAM | Your home is our passion | 80

GET INSPIRED

By Our Passion



My dream has always been to create living spaces in complete harmony with the souls of those who will encounter them, houses with elegance based on a sophisticated design concept, in connection with nature and the Mediterranean lifestyle. My dream came true when TERRAZA BALEAR was founded. Since that day, our mission has been to interpret the ideas of our clients and create soulful homes for them with unique and distinctive atmospheres. We are proud to have arrived where we are today and we step forward towards the future with energy and passion. I am very excited to present to you our new magazine and to invite you to discover what we do, and imagine what we could do for you.

My deepest THANKS go to everyone who plays a key role in TERRAZA BALEAR: our partners, our brands, our craftsmen and especially our passionate staff. Without all of them nothing would have been possible. Our wonderful clients are the empowering engine that makes us learn and get better day by day, so we will be more than pleased to meet you in person in our showroom where we can explore together a wide universe of solutions to not only satisfy your needs, but even go beyond your expectations. You are holding a piece of our hearts in your hands... please take a deep breath, relax and embark on an inspiring journey through our signature designs and the authentic souls of our projects. ENJOY!

Mariana Muñoz

CLOUD

Flying High

Heaven can't be far away when sitting on the terraces of this beautiful house built directly on the cliffs. Cala Llamp, a bay just outside Puerto de Andratx, is one of the most sought-after residential areas on the coastline of Mallorca. The Tramuntana mountains embrace it with high cliffs and the sea has washed lagoon-like pools into the rocks.

The setting is magnificent with the open sea in front and endless skies above. A house on this sublime spot has to be spectacular simply to do justice to nature. The architects of Domus Vivendi have been aware of this challenge right from the start and the Terraza Balear team felt honoured to share this experience with them all the way through the building process of 'Cloud', as the house is called.







Skilfully carved natural stone wraps around the three-storey building and terraces the grounds in a manner reminiscent of rural Mallorca. Everything else about the 2000 square metres of the house is decidedly urban and appropriate for a jet-setting lifestyle. Divided into three sections, the main house, 'My Cloud', and guest wing, 'Guest Cloud', have a communal section between them called 'Chill Cloud', with areas for fitness and wellness.

Emotions are triggered by every angle of this project: the main living area is a spectacular setting, a huge vertical space surrounded by 'natural' walls. A curtain-like waterfall in the double-height entrance hall and vertical gardens create a magical atmosphere to please all senses.

All furniture and decorations have been chosen with great care and attention to detail. Warm and earthy colours bring the outdoors in, well-defined furniture complements the strong architecture. The lighting scheme consists of indirect atmospheric systems along with iconic pieces to accentuate every room. Many of the selected pieces of furniture are by leading Italian brands such as B+B Italia, noble design that will stand the test of time, remaining independent of trends and fashion.

A stunning piece, unique and a precious gift of nature, is the big table in the main living room. Its timber top is made from a million-year-old cedar tree from New Zealand, where a prehistoric forest has been found perfectly preserved in a swamp area. Handmade in Italy by skilled craftsmen, there are no two tables alike in the world.







As all rooms of this project were planned for breaking the boundaries, we also wanted to add something really special to the master bedroom by making the dressing room a design statement in itself. Entered through sliding glass doors, it has the appeal of a crystal cube with a well-fitted boutique inside. A large timber unit with drawers stands in its centre for all the little accessories, and floor-to-ceiling open wardrobes organise the hanging clothes. Light straps under the shelves and some decorative fittings illuminate this fantastic space in an appropriate way.







Needless to say, the outdoor areas are designed and furnished in the same quality as the indoors. Century-old olive trees shade the terraces and widen the colour palette for the furniture with their greyish greens.

The whole ensemble of 'Cloud' is a masterpiece of art and skills. Quality and exclusivity have been the guiding principles and perfection subtly goes beyond expectations. As the name suggests, this is a dwelling created for living in seventh heaven.











vitra.



Grand Repos Developed by Vitra in Switzerland, Design: Antonio Citterio

www.vitra.com/grandrepos

CAP ADRIANO

Beyond Luxury

One can hardly describe this project without superlatives: only a stone's throw from the sea, the world's greatest super yachts in front of the terrace, outstanding architecture with state-of-the-art technical appliances and an interior of relaxed elegance and effortless sophistication. Located right at the harbour of Port Adriano, this exceptional setting is one of the most desirable locations on the island, allowing our designers to dream big and imagine how the inhabitants would experience this place.

Open spaces were planned throughout the house by Guillermo Reynes Architecture Studio, while our design team selected all the aesthetics of the building, including colour schemes, furniture, lighting and art work, taking into account the layout and the need not to obstruct the breathtaking views.











The staircase in the entrance of the villa is a unique feature. Completely built of curved glass, it impresses like a piece of modern art. To highlight its beauty, we placed our most iconic light in the centre of this spiral. Huge glass balls hang down from the top floor like giant raindrops offering a spectacular sense of arrival and welcome.

Generous size furniture works well all over the house, always using different material combinations and fabrics in undefined shades of beige and natural tones, creating a harmonious and relaxing ambience.

The design concept plays with surfaces and textures rather than décor and colour. When you prioritise the human needs within a space, design can have a profound impact. This project has its own material language, because to touch the souls of people, it must have a soul of its own.

Luxurious yet understated, this villa connects perfectly with the Mediterranean with its mighty presence seen and felt in every room, and leaves nothing left to desire.









Living the good life outside.
Love it, live it, share it.

www.tribu.com

TRIBÙ
The art of leisure

CALIFORNIA

Home Sweet Home

The prestigious area of Bendinat, with its luxurious villas and the royal golf course, with the Tramuntana mountains to the rear and the coastline in front is the dazzling location for this house. It was an exciting project for Terraza Balear in collaboration with APM to enhance the environment and all forms of life within. For this project, it was essential to get to know the owner's family and their everyday routines in order to create the perfect shell for them.

They wanted a house with a totally secluded feel, directed to the inside, but filled with light at the same time. This was achieved with an interesting architectural idea, a patio in the middle of the house. An age-old olive tree, the emblematic plant of the island, was placed in its centre like a sculpture. The whole house seems to embrace its inhabitants just as the internal patio embraces the tree.







In a u-shape around that tree are the main living and dining areas and open plan kitchen as well as the entrance and staircase with glass walls, which makes the building totally transparent in its centre. At the open end of the u-shape is the main terrace and pool area with sliding glass doors for a wide openness to the living area.

Even from the first floor, where all the bedrooms and bathrooms are situated, views go straight through to the outdoors due to an open gallery. To make the house feel airy and natural at one time, the stones that accentuate some internal walls and the staircase were carefully chosen. They couldn't be too earthy or orange like the typical Marés of the island, rather beige with a greyish tone. As they are hand-hewn, their colour varies in a lively way. All furniture and textiles follow the natural shades of these stone walls, leading to an elegant but equally cosy atmosphere where every little detail was considered with love.







FLEXFORM

FLEXFORM | MADE IN ITALY

Home at last.



**ADDA
SECTIONAL
SOFA**

*design by
Antonio Citterio*

FLEXFORM
www.flexform.it



GABELLÍ

Absolute Design

For our latest breathtaking project, our team had the honour to participate with Mallorca Heritage and Nacho Pons from 3de3 Architects in this masterly creation, working from the architectural design to the last detail including structural form, selection of materials, floors, walls, furniture and decoration. The house is located in a privileged spot on the island, embraced by a forest and uniting with the sky and the sea, while providing spectacular views over Palma Bay.

Built directly into the hill, the house is surrounded by stone walls. They give the whole scenery a very natural feel as they have the look of the traditional hand-hewn local sandstone walls that characterise the island. These walls seem to protect the house at the rear while its front is completely open to the sea and sun. Horizontal lines predominate throughout the structure that consists of three panoramic floors with fantastic views of the sea. Huge glass sliding doors connect outdoors and indoors and give the whole house a wonderful holiday feeling all year round.











An outstanding construction detail is the internal patio in the centre of the building. It houses the main staircase and the lift and is planted with mature trees, which underpin the idea of bringing the outdoors in. The patio is like a vertical nerve in the spine of the house. Wooden panelling on all three floors marks it clearly.

Clear shapes and clean lines in all the furniture correspond with the structure of the building.



With this spectacular setting, our main design focus was to create a calm and elegant ambience that allows the landscape to play the biggest part on this magnificent stage. Our colour-palette was nature's own, inspired by the surroundings with so many beautiful shades of stone, sand and wood. Every element of the house breathes the iconic Terraza Balear style, with natural textures and calm colours for an elegant, yet relaxed, lifestyle.















The infinity pool sits on the top level, which seems unusual but makes sense with the distribution of the house from public areas on the entrance level to more private areas further downhill. The kitchen, dining area, open plan living area and huge terraces with the pool embedded all flow into one another.

The whole house is about structure and texture; impressing clear architecture amidst natural woods outside; rough stone walls contrast with smooth furniture surfaces; robust natural fabrics stimulate the tactile senses. This tranquil haven is never imposing but decidedly sophisticated.



Poliform

MAIN DESIGN

Interior Architecture Design



We shape inviting and comfortable living spaces to embrace all their inhabitants. The style that identifies Terraza Balear is essentially Mediterranean yet contemporary, natural and relaxed, yet elegant and timeless. Right from the start of each project, we work hand in hand with the architects and study all phases of the development. Our design team studies the architectural layout; checks all materials; develops a lighting plan with specialised technicians; prepares technical drawings with all measurements; engages specialists to create high class renders of all rooms in detail; creates an estimate of costs for all external works by our trusted partners and keeps control of customised orders to guarantee the expected results down to the smallest detail. We oversee the whole construction process and all works together with architects and builders to create an emotional atmosphere of wellbeing.



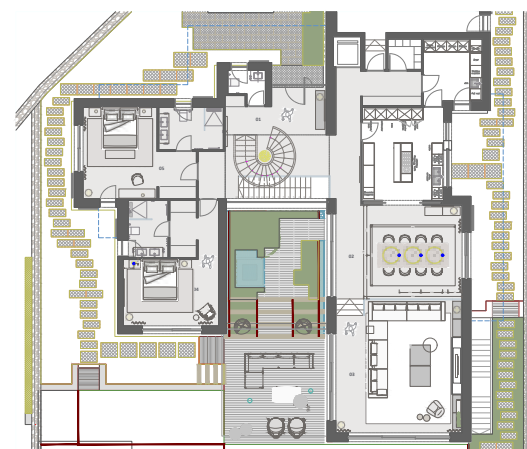
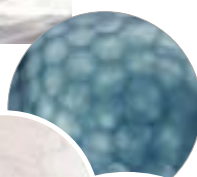
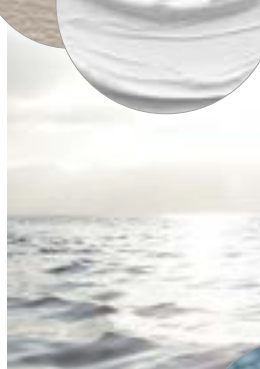
INTERIOR DESIGN

Home Furnishing Design



Terraza Balear offers a tailored design scheme to create an inspirational and distinctive interior, which bears a unique character. We help you to create your dream home from the overall design to the smallest detail and work with big mood-boards to let you clearly visualise our ideas and concepts. All materials will be collected and presented in combination, so that you can touch wood and stone with their final finishes; fabrics and carpets to see the textures; metal and all other materials within the chosen colour scheme; and thus get a realistic feeling for your new home.

We select the finest furniture and decoration for every space and make sure it all connects well for a house filled with heart and harmony -- with the seal of Terraza Balear and with your own identity. We provide bespoke services. From the perfect look, to making sure it all happens to the highest quality standards.

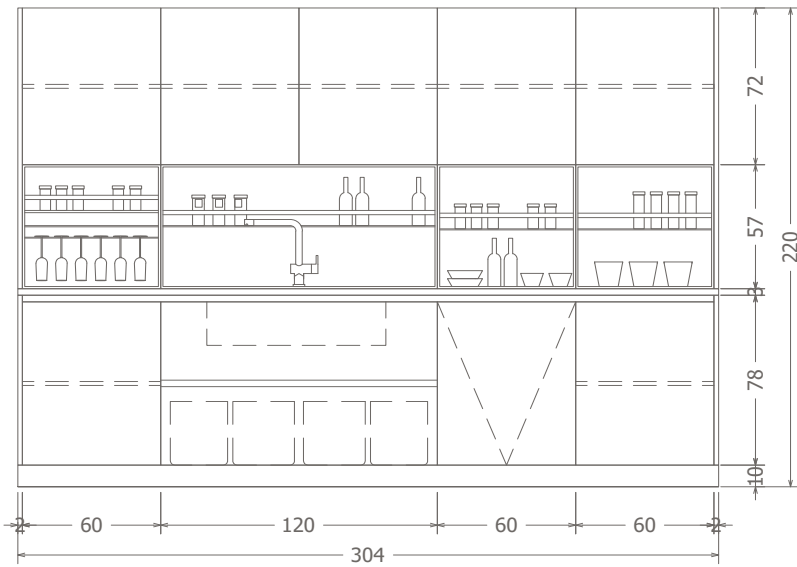
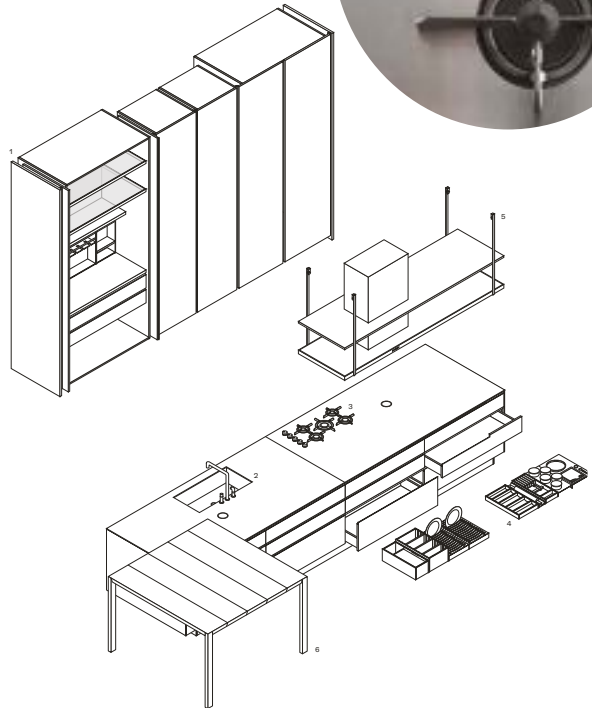
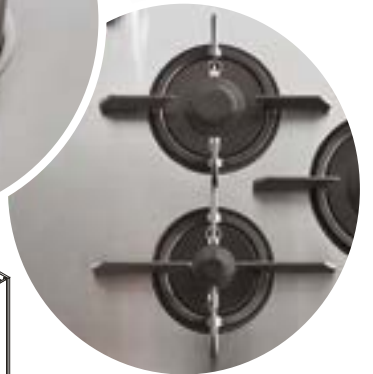
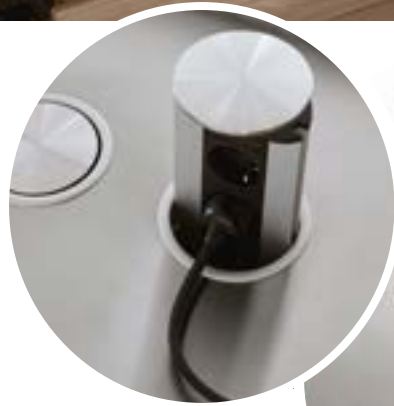


KITCHEN DESIGN

Essential Tailored Solutions



At Terraza Balear we feel that it is important to speak one language throughout the whole project. Designing all rooms in the same style and at the same quality level ensures harmony and tranquillity. In order to provide this overall interior and architectural design service, we are now offering professional planning and customising for the true heart of every house -- the kitchen. Our idea of a contemporary lifestyle includes a kitchen that opens to the living area, a space with the same taste and culture as the rest of the house. Excellent materials with exclusive finishes and sophisticated details are the obvious expression of that taste, but we are also passionately excited about integrated solutions for cooking, perfect functionality and high tech appliances. With the refined elegance of the Italian manufacturer Poliform we are ready to design marvellous kitchens for your home. We transpose the contemporary style of 'Made in Italy' into the Mediterranean style that defines Terraza Balear and make sure your family will harmoniously tune in with the heartbeat of your new kitchen.



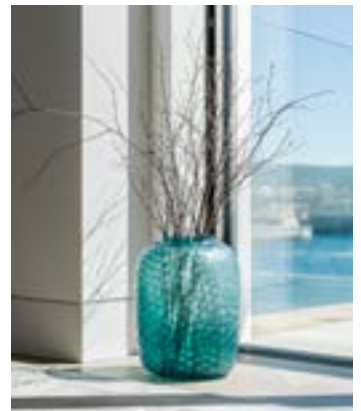
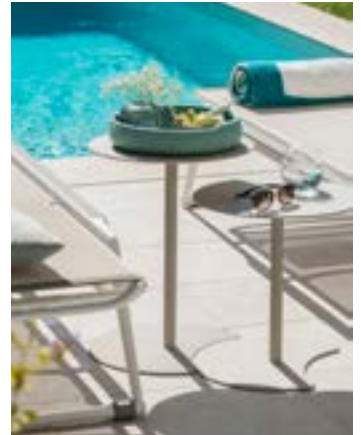
STYLING

Touching all Senses



The house is the smallest nucleus we live in. It is sort of our outer skin and needs to fit like a beautifully tailored dress. And just as a fine dress gets its perfection from the right accessories, our stylists will optimise the spaces of your house with a subtle visual language and bring forth a variety of emotions for a balanced atmosphere. Their job is to create timeless spaces that will remain stylish, beautiful and functional for many years and this requires attention to every little detail.

Nothing is unimportant, from a cosy blanket on the sofa and tactile ceramics on the table, to scented candles and craft-objects to adorn shelves and side tables. Houseplants and fresh flowers are highlighted in handsome containers. Last but not least: art pieces. We work together with some of the island's most prestigious artists. You can rely on our knowledge and taste for the scenery you want to create in your home.



SHOWROOM

A Source of Inspiration



Our showroom is designed as an inspirational journey through the world of Terraza Balear. It invites you to experience our typical look and feel and to see the potential of our work. You will find a very personal selection of the company's exclusive furniture, expressing not only our taste but also our demands for quality and style.

We want to inspire you and create atmospheric spaces for all the different areas of the house using regularly changing displays, so that you can closely touch and try what will make your life beautiful. Our design concept does not end within the walls. Especially on this beautiful island, where a great part of everyday life plays outdoors, furniture for garden and terrace is nearly as important as for the interior. We work with the best international brands to provide our clients with weather-resistant and stylish outdoor living spaces. When are you in Mallorca next? Please drop by for a visit and let yourself be intrigued.











RODOLFO DORDONI

Essential Moments
with Designer Rodolfo Dordoni

Born in Milan in 1954, Rodolfo Dordoni received his Architecture degree in 1979 from the Milan Polytechnic University, the university that produces architects of the highest stature.

After graduation, Dordoni launched himself into the world of design, creating many products and quickly becoming head of design supervision for a leading company in the field of Italian and international design. In 1997, he began working with Minotti and in 1998 he was appointed Art Director and coordinator of all the company's collections. In 2005, he established Dordoni Architects, along with Alessandro Acerbi and Luca Zaniboni, specialising in residential and commercial architecture and interior design and staging. The firm manages the design and building of private homes, industrial and commercial spaces, showrooms, exhibit stands, restaurants and hotels.



A time-tested partnership: Rodolfo Dordoni and Minotti

The meeting between the Milanese architect-designer and the company took place in 1997 with the presentation of a small collection of pieces – sofas, dining and coffee tables. A “declaration of intent” that, in 1998, took on a new dimension with a much broader scope, culminating in the designation of Rodolfo Dordoni as Art Director and coordinator of all the company’s collections.

The origins of this successful and richly rewarding partnership, now in its 20th year, can be found in the deeply resonant understanding between Rodolfo Dordoni and the Minotti brothers, Renato and Roberto, and in the absolute alignment of their vision.

The cultural background, professional experience and discerning taste that Rodolfo Dordoni brought to the table found fertile ground in a company that knew exactly how to translate the designer’s visionary insights into tangible projects. Year after year, collection after collection, this partnership has contributed to strengthening the brand’s identity and the stylistic continuity that has become its trademark feature.

The Minotti collections emerge from a process of absolute sharing of creative stimuli. Insights, observations and inspirations gain momentum, merging into authentic aesthetic motifs that interpret the Minotti style with contemporary sophistication and a clear focus on details, finishes and materials that imbue the collections with personality and uniqueness.

The creative synergy with Rodolfo Dordoni also extends to the staging of the Minotti stand at various editions of the Salone del Mobile in Milan and the Cologne furniture fair, as well as the staging of retail spaces like the Minotti New York flagship store, crafted in 2010, and the corporate showroom in Meda established in 2012. Dordoni and Minotti - a winning combination - yesterday, today and tomorrow.



Q: When did you start your collaboration with Minotti and what was the initial reason for this decision?

Dordoni: Roberto and Renato Minotti had already begun to realise that working with an architect would be beneficial in the transformation process they had in mind for the growth of their company. In fact, they say that from the very beginning, they felt an immediate connection with me, an extraordinary sharing of minds and visions. They saw me as a man of quality and excellent taste, the right person to personify the architect-interior designer with cultural roots in Milanese design and a sensitivity toward decoration that they intuitively felt was right for Minotti. So I was appointed Art Director and coordinator of all company collections back in 1998. It was all very amazing but initially we agreed on a 5-year partnership, which has since been renewed and modified in content and now, here we are, 20 years later.

Q: Mr Dordoni, tell us about your personal vision and the evolution of working with Minotti throughout the last 20 years.

Dordoni: Summarising 20 years of intensely rewarding teamwork, dedication and impassioned effort is not easy. Still in progress, this is a meaningful journey and we would

like to bring the most compelling moments to life for you. Regarding the evolution of working with Minotti, in the early stages, we poured our energies not only into the design of new products but also into the development of marketing strategies that would allow us to first, create and then, strengthen an authentic brand identity.

With this in mind, it also became increasingly important to place our products in settings that clearly exemplified the brand's style. Year after year, the ad campaigns and the stands at the Salone del Mobile portrayed a sharper and more discernable image. Our network of flagship stores allowed us to create showrooms that thoroughly and dramatically conveyed the essence of the brand, all around the world.

In recent years, some landmark decisions have allowed us to expand our vision into other areas. First, the Lifescape in/outdoor collection project, and then the Minotti Hospitality project made it possible to transfer our expertise to these sectors, not by following market demand but by creating concepts that inspired new directions in design.





Q: Which values do you think best represent MINOTTI as a leading brand worldwide?

Dordoni: The concept that best represents Minotti is undoubtedly its ability to innovate in the spirit of continuity. Vitality, consistency, commitment and passion are the foundation of our partnership and of our shared vision, converging into a variety of projects and initiatives, that will guide us toward the future.

Central to the Minotti identity is the full expression of the “Made in Italy” concept, which today permanently melds tradition and technology. The skills of artisan craftsmen are employed to finish a product created by modern mechanisation; the intelligence of the hands balances industrial precision with sensitivity and emotion.

Added to this high degree of knowledge is intensive research

into material and technological solutions that elevate the talent for impeccable details in a conceptual commitment to excellence, that involves every area of the company. Timeless design, unrivalled comfort, reliability and durability are easily-recognised style features of the Minotti collections – all of it proudly and honestly “Made in Italy”.

Q: Which are your sources of inspiration and how do you focus on your creative process?

Dordoni: Over the course of these 20 years, the way I am working with Minotti has changed dramatically. At the beginning, there was an exchange of ideas based on a drawing, then a joint work on a prototype and so forth. Now, it's like moulding clay; we work directly on the prototype. We work in the same way as we would for sculpture. As the Minotti brothers say: “It has been a journey of getting to know each other better and learning how to best work



Rodolfo Dordoni with Roberto Minotti

together, starting with the product and then flowing into a more structured definition of our corporate identity and our collections. That led us to expand our vision in terms of product range until we achieved a complete range of products for the home through the “collection” and “lifestyle” concepts. And, based on a principle of innovation in the spirit of continuity, collection after collection, we have worked together with consistency and commitment, sending a strong global message of quality and “Made in Italy” value”.

Q: Which are the next projects you are working on?

Dordoni: After our diversification into other business areas, from residential to hospitality, including a debut in the outdoor market segment, there are still many projects in the works, fuelled by enthusiasm and passion, that will lead us toward the next global-scale challenges.

Introducing the new Lawrence Seating System

Drawing upon expertise gained over the years, Minotti expands its creativity in new directions, in a spellbinding layering of influences and styles, perfectly balanced between the classic and the contemporary. To innovate while staying true to the Minotti style and traditions is an objective deeply embedded in the company’s corporate vision. The design project for the “Home Anthology” collection goes well beyond the brilliant execution of a stylistic exercise; if anything, it is the transformation of a highly intuitive idea into a tangible product, one that brings vitality and form to different lifestyles and ways of inhabiting the home today. A wide-ranging and eclectic style that is also reflected in the new Lawrence Seating System, with its own, unmistakable personality, but capable of weaving an inspiring dialogue using an interplay of shapes, materials and fresh influences.



DEDON

TOUR DU MONDE



DEDON COLLECTION TIBBO
Design by Edward Barber & Jay Osgerby

www.dedon.de

SEBASTIAN HERKNER

Essential Moments with Designer Sebastian Herkner

Sebastian Herkner was born in 1981 in Bad Mergentheim. He studied product design at the HfG Offenbach am Main (Offenbach University of Art and Design), already focusing during his studies on designing objects and furniture merging various cultural contexts, combining new technologies with traditional craftsmanship in order to highlight the multifaceted beauty of the materials and draw renewed attention to small details.

Whilst still a student, Herkner did an internship with Stella McCartney in London, which helped to hone his feeling for materials, colours, structures and textures. Since founding his own design studio in Offenbach am Main in 2006, he has designed products for manufacturers such as Cappellini, ClassiCon, Dedon, Fontana Arte, Moroso, Pulpo, Thonet and Wittmann, as well as working on interior design projects and for exhibitions and museums. Since 2007 he has taught several courses at HfG Offenbach am Main as visiting lecturer. His designs have received multiple prizes, for example the 2011 German Design Award in the Newcomer category, the 2015 EDIDA Award for Best International Newcomer and Guest of Honour at IMM Cologne 2016.



Q: What would you describe as the “essence” of a Sebastian Herkner design, what is your very own concept?

Sebastian: The studio follows our instinct and design philosophy. It is about crafts, material and colour in a responsible and interesting way. We like to work in direct contact with the craftsmen to develop unique objects which are suitable to the DNA of a company and our approach.

Q: What are your sources of inspiration?

Sebastian: Well, I travel a lot around the world, meeting people, spotting interesting cultural aspects and crafts, sometimes a colour or detail. Inspiration is actually everywhere, most important is to have the personal instinct at the right time to develop something powerful and unique.

Q: When did you start your collaboration with DEDON and what was the initial reason for this decision?

Sebastian: We started about three years ago. I met Sonja, the Creative Director of DEDON at the fair in Milan and she invited me to the HQ in Lüneburg. DEDON is a quite interesting company, a mix of technology and handcrafted design process. In Germany they produce the fibres in-house and ship them afterwards to the Philippines to their own facilities. I went with them to Cebu already to understand the process better and to get in contact with the artisans. It is a great and very comfortable brand to work with. There is always the vision of creating a new outdoor spirit and a new way of living outside.

Q: Why do you think DEDON is a leading brand worldwide?

Sebastian: I think it is the whole philosophy of the brand, the spirit and teamwork. They all have the same dream of a premium outdoor lifestyle.

Q: What are your vision and thoughts on the current design industry?

Sebastian: I am one of many designers and I have worked with my team for almost 11 years on our own design attitude. I think a designer is quite powerful in the product world. We have a huge responsibility in many cases. We have to take care of a fair and sustainable production. We think about function comfort and need. We have to teach the audience how to use a product and how to integrate it in our lives in a positive way. It is important to tell the customers the process of design engineering and developing. Good design is important and is not something trendy we just use for a season. My idea is to design products which become companions, something you want to have next to you your whole life. It is about quality, material and service.





Introducing the new MBrace extensions – Dining, Daybed & Arabica Colour

MBRACE takes a joyfully unconventional approach to outdoor furniture, bringing DEDON Fibre seating and a solid teak base together. The result is an eye-catching, instantly likeable collection that captures the spirit of barefoot luxury while extending the DEDON design language into new, more Nordic territory.

NEW: MBRACE DINING AND DAYBED

Having firmly established itself as a poolside and lounging favourite, MBRACE by Sebastian Herkner now brings its welcoming embrace to the dining area. New additions are characterised by the same joyful unconventionality, deep comfort and rich material mix that made the original MBRACE collection such a hit, winning it the prestigious 'Best of Best' prize at the Iconic Awards 2016. Made of solid teak and available in two sizes, the dining table shares the design language of the chairs, from the construction of the base to the surfboard-like curves of the tabletop. Made of slats, with small gaps between them, the tabletop also shares the open, breezy quality of the woven seating. "Not just a closed surface, the table interacts with the garden," Herkner

explains, "same as with the chairs." A daybed completes the MBRACE lounging selection, with eye-catching organic curves and understated Nordic elegance.

MATERIALS:

Like the original loungers, the new MBRACE dining chairs feature a solid teak base and wrap-around seating that cocoons users in cosy comfort. The seats themselves are woven in the collection's distinctive, mesh-like triaxial weave of DEDON Fibre, which gives them a breezy openness. As Herkner notes, this allows the chairs to "embrace their surroundings, becoming one with the environment."

WHAT SEBASTIAN HERKNER SAYS ABOUT IT:

One of Europe's leading young design talents, Herkner approached the dining extensions with characteristic thoughtfulness: "A dining table today is not just for dining — it's for communicating, playing and working, also outdoors. The chairs had to be upright, of course, but not too formal. And it was very important that the table be narrow, only 90cm deep, to create a space for real togetherness with others."

THE TEAM

Your Home is our Passion



MANAGING OWNER

Mariana Muñoz

MAIN DESIGN

Carmen Pujol
Rosa Gost
Ann-Chr. Markmann
Marina Schall
Thays Runge

INTERIOR DESIGN

Elena Giménez
Indiana Dormer
Franziska Heck
Aina Ripoll

KITCHEN DESIGN

Niklas Massone
Irene Bericua

STYLING

Miguel Oliver
Claire Knabe

LOGISTICS

Felipe López
Zachary Dormer
Libardo Ortiz
Nikolay Yankow
Lorenzo Martín

ADMINISTRATION

Begoña Suarez
Mónica Osorno
Rocio Sanchez
Joan Bosch
Petra Sedláčková
Lina Morinigo

SALES

Alicia Ferrer
Markus Riess
Christian Neuhaus

MARKETING

Soraya Ruiz

OUR BRANDS

Simply Design

agape

B&B
ITALIA

BOCCI



DEIDON



FENDI

FLEXFORM
FLEXFORM | MADE IN ITALY

FLOS
ARCHITECTURAL

FF
FREITRAU



GERVASONT

Glatz
Shade in Swiss Quality

JANUA

KEVIN REILLY
COLLECTION



LIMITED EDITION

LIVING
DIVANI

louis
poulsen

MANUTTI
Belgian modern furniture

MERIDIANI

Minotti

mooi

Molteni & C

PAOLA
LENTI

PIET BOON

Poliform



porada

Rimadesio

1920
R
MADE IN ITALY

RODA

Secto
DESIGN

Tom
Dixon.

TUUCI

TOHASTIGRAU

TRIBÙ
The art of leisure

van roossum

VIBIA

vitra.

Zoom
byMobimex

DESIGN PORTRAIT.

